

# PM040JS

## DC Brush Motor



### ● General information

- Ball bearing/sintered Bronze bearing available
- Ceramic Magnet
- 7-slot Armature
- Copper-Graphite Brush
- Encoder Planetary gearbox available

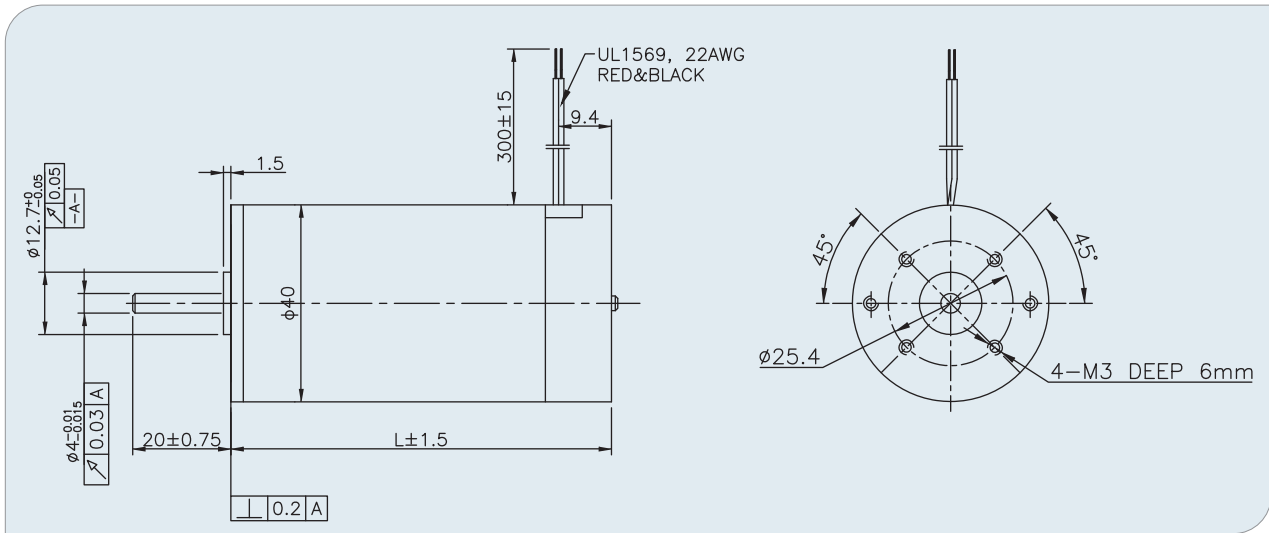
### ● Specifications

SPECIFICATION		PM040JS100	PM040JS200	PM040JS300	PM040JKS400	PM040JS500	PM040JS600
Rated Voltage	(VDC)	24	24	24	24	24	24
No Load Speed	(RPM)	6870	5880	6100	6320	4920	5230
No Load Current	(A)	0.16	0.15	0.18	0.19	0.16	0.18
Nominal Speed	(RPM)	5770	5410	5200	6000	4400	4850
Nominal Torque	(NCM)	1.7	3.3	4.3	4.9	6.7	8.1
Nominal Current	(A)	0.88	1.35	1.35	2.08	2.14	2.77
Nominal Power	(W)	10.3	18.7	23.4	30.8	30.9	41.1
Peak Torque	(NCM)	9.6	22.2	29	34.7	43.6	54.2
Peak Current	(A)	3.25	6.09	8.1	10.1	9.64	13
Ke	(V/KRPM)	3.25	3.9	3.82	3.65	4.8	4.44
Rotor Inertia	(Kg.m <sup>2</sup> ×10 <sup>-7</sup> )	1.9	3.2	4.2	5.6	7.1	8.5
Resistance	(OHMS)	7.38	3.94	2.98	2.37	2.49	1.85
Insulation Class		B	B	B	B	B	B
Weight	(Kg)	0.16	0.19	0.25	0.34	0.39	0.44
L	(mm)	48	57	62	70	78.8	86

# PM040JS

## DC Brush Motor

● Mechanical



● Characteristic diagram

