

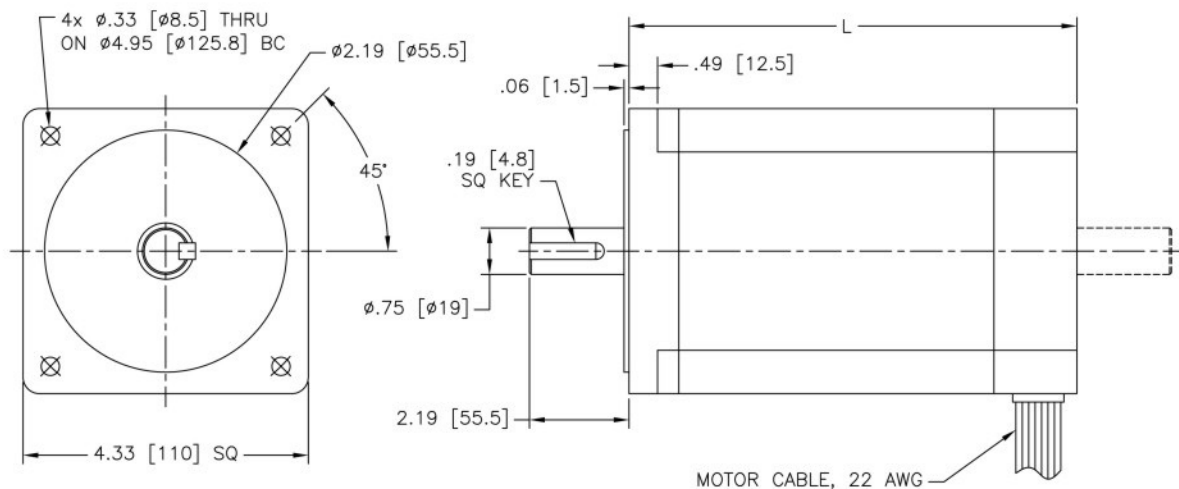
ST110YG Stepping Motor

General Features

- 110mm, 1.8Degree Enhanced Hybrid Stepper Motor



Outline Drawing and Dimensional Data



Technical and Performance Data

Model	Connection	Phase Current (A)	Phase Resistance (Ohms)	Phase Inductance (mH)	Holding Torque (N.m)	Detent Torque (N.m)	No. of Wires	Rotor Inertia (Kg.cm ²)	Length (mm)	Weight (Kg)
ST110YG100	Parallel	10.7	0.16	2.8	11.68	0.3	8	5.5	99	4.96
	Series	5.3	0.63	11.1	11.68	0.3	8	5.5	99	4.96
	Unipolar	7.5	0.31	2.8	8.26	0.3	8	5.5	99	4.96
ST110YG200	Parallel	15.8	0.1	2.1	22.09	0.59	8	10.9	150	8.34
	Series	7.9	0.41	8.4	22.09	0.59	8	10.9	150	8.34
	Unipolar	11.2	0.21	2.1	15.63	0.59	8	10.9	150	8.34
ST110YG300	Parallel	15.4	0.14	3.2	30.81	0.75	8	16.2	201	11.64
	Series	7.7	0.55	13	30.81	0.75	8	16.2	201	11.64
	Unipolar	10.9	0.28	3.2	21.81	0.75	8	16.2	201	11.64